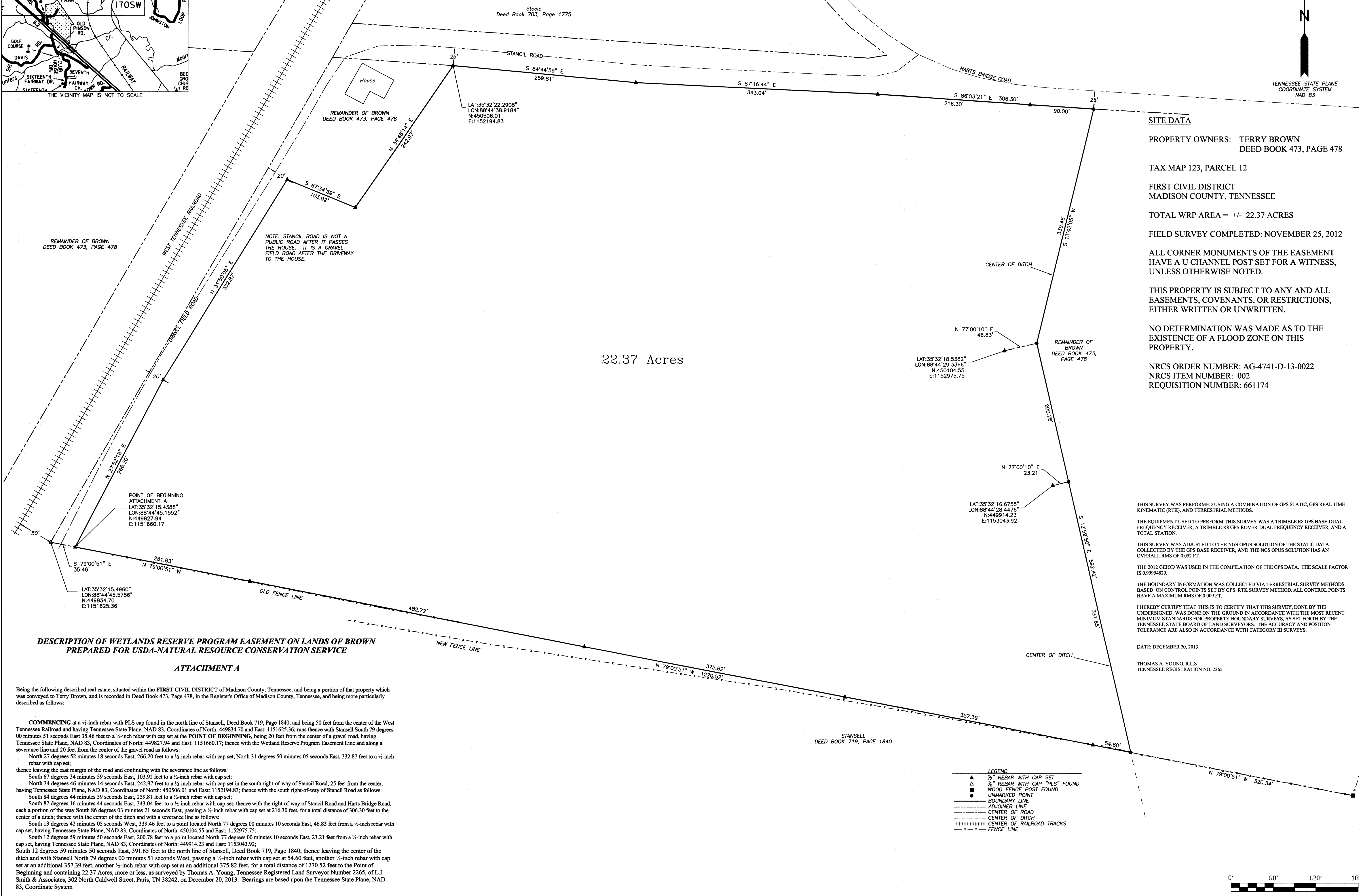
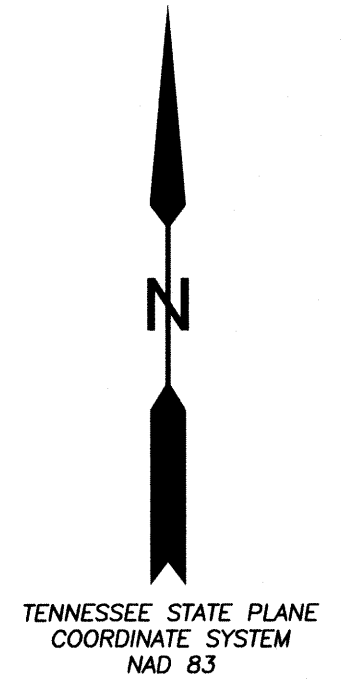


THE VICINITY MAP IS NOT TO SCALE



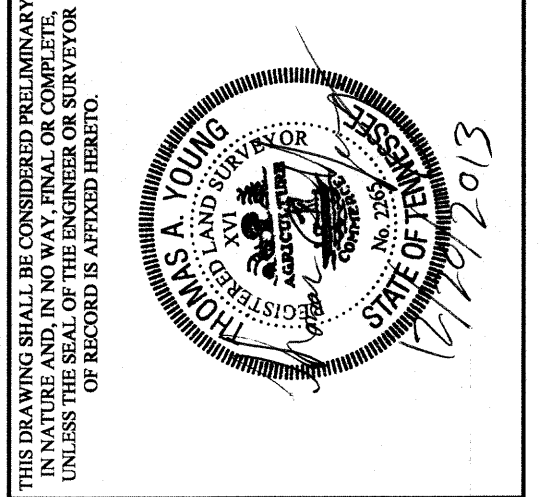
22.37 Acres

SITE DATA
 PROPERTY OWNERS: TERRY BROWN
 DEED BOOK 473, PAGE 478
 TAX MAP 123, PARCEL 12
 FIRST CIVIL DISTRICT
 MADISON COUNTY, TENNESSEE
 TOTAL WRP AREA = +/- 22.37 ACRES
 FIELD SURVEY COMPLETED: NOVEMBER 25, 2012
 ALL CORNER MONUMENTS OF THE EASEMENT
 HAVE A U CHANNEL POST SET FOR A WITNESS,
 UNLESS OTHERWISE NOTED.
 THIS PROPERTY IS SUBJECT TO ANY AND ALL
 EASEMENTS, COVENANTS, OR RESTRICTIONS,
 EITHER WRITTEN OR UNWRITTEN.
 NO DETERMINATION WAS MADE AS TO THE
 EXISTENCE OF A FLOOD ZONE ON THIS
 PROPERTY.
 NRCS ORDER NUMBER: AG-4741-D-13-0022
 NRCS ITEM NUMBER: 002
 REQUISITION NUMBER: 661174

**PLAT OF WETLANDS RESERVE
 PROGRAM EASEMENT ON LANDS
 OF BROWN PREPARED FOR
 USDA-NATURAL RESOURCE
 CONSERVATION SERVICE**

NO.	REVISIONS DESCRIPTION	DATE

THIS SURVEY WAS PERFORMED USING A COMBINATION OF GPS STATIC, GPS REAL TIME KINEMATIC (RTK), AND TERRESTRIAL METHODS.
 THE EQUIPMENT USED TO PERFORM THIS SURVEY WAS A TRIMBLE R8 GPS BASE-DUAL FREQUENCY RECEIVER, A TRIMBLE R8 GPS ROVER-DUAL FREQUENCY RECEIVER, AND A TOTAL STATION.
 THIS SURVEY WAS ADJUSTED TO THE NGS OPUS SOLUTION OF THE STATIC DATA COLLECTED BY THE GPS BASE RECEIVER, AND THE NGS OPUS SOLUTION HAS AN OVERALL RMS OF 0.052 FT.
 THE 2012 GEOID WAS USED IN THE COMPILATION OF THE GPS DATA. THE SCALE FACTOR IS 0.99994859.
 THE BOUNDARY INFORMATION WAS COLLECTED VIA TERRESTRIAL SURVEY METHODS BASED ON CONTROL POINTS SET BY GPS RTK SURVEY METHOD. ALL CONTROL POINTS HAVE A MAXIMUM RMS OF 0.009 FT.
 I HEREBY CERTIFY THAT THIS IS TO CERTIFY THAT THIS SURVEY, DONE BY THE UNDERSIGNED, WAS DONE ON THE GROUND IN ACCORDANCE WITH THE MOST RECENT MINIMUM STANDARDS FOR PROPERTY BOUNDARY SURVEYS, AS SET FORTH BY THE TENNESSEE STATE BOARD OF LAND SURVEYORS. THE ACCURACY AND POSITION TOLERANCE ARE ALSO IN ACCORDANCE WITH CATEGORY III SURVEYS.



DATE: DECEMBER 20, 2013
 THOMAS A. YOUNG, R.L.S.
 TENNESSEE REGISTRATION NO. 2265

**DESCRIPTION OF WETLANDS RESERVE PROGRAM EASEMENT ON LANDS OF BROWN
 PREPARED FOR USDA-NATURAL RESOURCE CONSERVATION SERVICE**

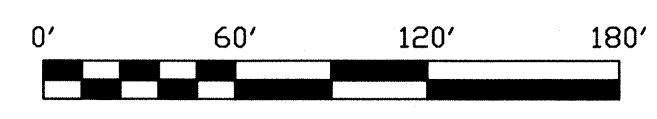
ATTACHMENT A

Being the following described real estate, situated within the FIRST CIVIL DISTRICT of Madison County, Tennessee, and being a portion of that property which was conveyed to Terry Brown, and is recorded in Deed Book 473, Page 478, in the Register's Office of Madison County, Tennessee, and being more particularly described as follows:

COMMENCING at a ½-inch rebar with PLS cap found in the north line of Stansell, Deed Book 719, Page 1840; and being 50 feet from the center of the West Tennessee Railroad and having Tennessee State Plane, NAD 83, Coordinates of North: 449834.70 and East: 1151625.36; runs thence with Stansell South 79 degrees 00 minutes 51 seconds East 35.46 feet to a ½-inch rebar with cap set at the POINT OF BEGINNING, being 20 feet from the center of a gravel road, having Tennessee State Plane, NAD 83, Coordinates of North: 449827.94 and East: 1151660.17; thence with the Wetland Reserve Program Easement Line and along a severance line and 20 feet from the center of the gravel road as follows:
 North 27 degrees 52 minutes 18 seconds East, 266.20 feet to a ½-inch rebar with cap set; North 31 degrees 50 minutes 05 seconds East, 332.87 feet to a ½-inch rebar with cap set;
 thence leaving the east margin of the road and continuing with the severance line as follows:
 South 67 degrees 34 minutes 59 seconds East, 103.92 feet to a ½-inch rebar with cap set;
 North 34 degrees 46 minutes 14 seconds East, 242.97 feet to a ½-inch rebar with cap set in the south right-of-way of Stencil Road, 25 feet from the center, having Tennessee State Plane, NAD 83, Coordinates of North: 450506.01 and East: 1152194.83; thence with the south right-of-way of Stencil Road as follows:
 South 84 degrees 44 minutes 59 seconds East, 259.81 feet to a ½-inch rebar with cap set;
 South 87 degrees 16 minutes 44 seconds East, 343.04 feet to a ½-inch rebar with cap set; thence with the right-of-way of Stencil Road and Hart's Bridge Road, each a portion of the way South 86 degrees 03 minutes 21 seconds East, passing a ½-inch rebar with cap set at 216.30 feet, for a total distance of 306.30 feet to the center of a ditch; thence with the center of the ditch and with a severance line as follows:
 South 13 degrees 42 minutes 05 seconds West, 339.46 feet to a point located North 77 degrees 00 minutes 10 seconds East, 46.83 feet from a ½-inch rebar with cap set, having Tennessee State Plane, NAD 83, Coordinates of North: 450104.55 and East: 1152975.75;
 South 12 degrees 59 minutes 50 seconds East, 200.78 feet to a point located North 77 degrees 00 minutes 10 seconds East, 23.21 feet from a ½-inch rebar with cap set, having Tennessee State Plane, NAD 83, Coordinates of North: 449914.23 and East: 1153043.92;
 South 12 degrees 59 minutes 50 seconds East, 391.65 feet to the north line of Stansell, Deed Book 719, Page 1840; thence leaving the center of the ditch and with Stansell North 79 degrees 00 minutes 51 seconds West, passing a ½-inch rebar with cap set at 54.60 feet, another ½-inch rebar with cap set at an additional 357.39 feet, another ½-inch rebar with cap set at an additional 375.82 feet, for a total distance of 1270.52 feet to the Point of Beginning and containing 22.37 Acres, more or less, as surveyed by Thomas A. Young, Tennessee Registered Land Surveyor Number 2265, of L.I. Smith & Associates, 302 North Caldwell Street, Paris, TN 38242, on December 20, 2013. Bearings are based upon the Tennessee State Plane, NAD 83, Coordinate System

LEGEND

▲	½" REBAR WITH CAP SET
△	½" REBAR WITH CAP "PLS" FOUND
■	WOOD FENCE POST FOUND
●	UNMARKED POINT
—	BOUNDARY LINE
- - -	ADJOINER LINE
— · — ·	CENTER OF ROAD
— · — · — ·	CENTER OF DITCH
— · — · — · — ·	CENTER OF RAILROAD TRACKS
— · — · — · — · — ·	FENCE LINE



BOUNDARY SURVEY NUMBER: 1 of 1
 SHEET: 1
 L. I. SMITH & ASSOCIATES, INC.
 SURVEYORS • ENGINEERS
 302 North Caldwell Street
 Paris, Tennessee 38242
 731-644-1044
 100 Johnson Pike, Suite 101
 Paris, Tennessee 38242
 615-351-7143
 Website: www.lismita.com
 DRAWN BY: MCCORRY CHECKED BY: YOUNG SCALE: 1" = 60'
 PROJECT # M123 - 12 / 7644 DATE: 12/20/2013